

ULTRA

BLADE FUSES



Ultra Wiring Connectivity System Ltd. renowned name in manufacturing of automotive connectors, terminals and precision plastic components from the past 3 decades, have also set up the state-of-the art Blade Fuse manufacturing plant in India in the year 2014.

The plant is equipped with high speed & highly accurate hydro-pneumatic presses and fully automatic PLC Assembly machines. For the plastic housing, Company is already a pioneer in manufacturing plastic connectors and components for OEMs .

The company is equipped with in-house testing labs for all types of tests required for fuses as per (JASO standards), along with a strong R&D team lead by a highly experienced team of engineers.

MINI BLADE FUSE

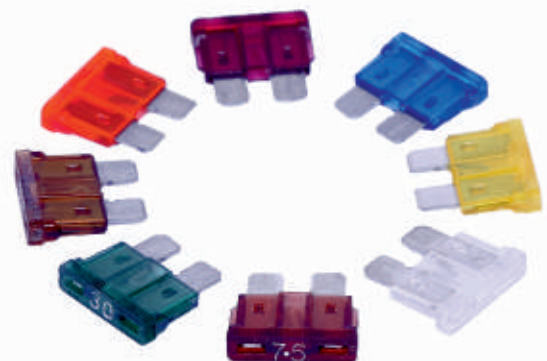


Product Lineup

| Ampere Rating(A) | Part Number | Housing Colors | Resistance Value | Voltage Drop*1 |
|------------------|-------------|----------------|------------------|----------------|
| 5 | UF0305-0122 | Tan | 16.7 mΩ | 112 mV |
| 7.5 | UF0375-0130 | Brown | 11.1 mΩ | 112 mV |
| 10 | UF0310-0104 | Red | 7.82 mΩ | 106 mV |
| 15 | UF0315-0110 | Blue | 4.93 mΩ | 99 mV |
| 20 | UF0320-0114 | Yellow | 3.48 mΩ | 95 mV |
| 25 | UF0325-0121 | Natural | 2.58 mΩ | 92 mV |
| 30 | UF0330-0107 | Green | 2.12 mΩ | 86 mV |
| 35 | UF0335-0131 | Dark Green | 1.64 mΩ | 79.85 mV |
| 40 | UF0340-0106 | Orange | 1.36 mΩ | 74.54 mV |

#1 Voltage drop: apply 100% of the rated current.

STANDARD BLADE FUSE



Product Lineup

| Ampere Rating(A) | Part Number | Housing Colors | Resistance Value | Voltage Drop*1 |
|------------------|-------------|----------------|------------------|----------------|
| 5 | UF0105-1422 | Tan | 17.5 mΩ | 121 mV |
| 7.5 | UF0175-1430 | Brown | 11.0 mΩ | 112 mV |
| 10 | UF0110-1404 | Red | 8.12 mΩ | 116 mV |
| 15 | UF0115-1410 | Blue | 5.08 mΩ | 105 mV |
| 20 | UF0120-1414 | Yellow | 3.58 mΩ | 99 mV |
| 25 | UF0125-1421 | Natural | 2.76 mΩ | 96 mV |
| 30 | UF0130-1407 | Green | 2.20 mΩ | 92 mV |
| 35 | UF0135-1431 | Dark Green | 1.76 mΩ | 91 mV |
| 40 | UF0140-1406 | Orange | 1.48 mΩ | 95 mV |

#1 Voltage drop: apply 100% of the rated current.

General Specification

| | |
|-----------------------------|---------------|
| Rated Voltage | DC32V |
| Breaking Capacity | 1000A |
| Recommended Operating Temp. | -40°C~120°C*2 |
| Standard | ISO8820-3 |
| Country of Origin | India |
| Plating | Sn Plating |
| Standard Packaging | 1,000 |

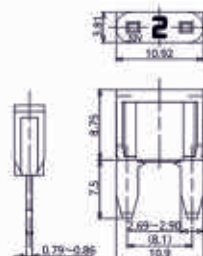
*2 Please contact us for the details of operating temperature.

Time-Current Characteristic

| % of Ampere Rating(A) | Operating Time | |
|-----------------------|----------------|---------|
| | Min | Max |
| 110% | 100hrs. | — |
| 135% | 0.75sec. | 600sec. |
| 160% | 0.25sec. | 50sec. |
| 200% | 0.15sec. | 5sec. |
| 350% | 0.04sec. | 0.5sec. |
| 600% | 0.02sec. | 0.1sec. |

*The fuse characteristic may change depending on the conditions of use.

Dimensions



General Specification

| | |
|-----------------------------|---------------|
| Rated Voltage | DC32V |
| Breaking Capacity | 1000A |
| Recommended Operating Temp. | -40°C~120°C*2 |
| Standard | ISO8820-3 |
| Country of Origin | India |
| Plating | Sn Plating |
| Standard Packaging | 1,000 |

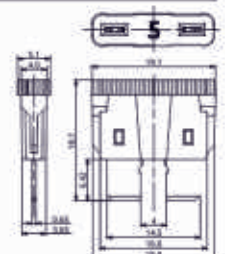
*2 Please contact us for the details of operating temperature.

Time-Current Characteristic

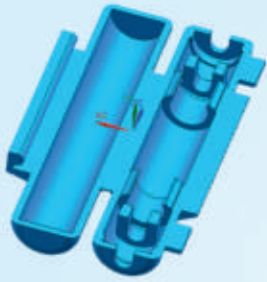
| % of Ampere Rating(A) | Operating Time | |
|-----------------------|----------------|---------|
| | Min | Max |
| 110% | 100hrs. | — |
| 135% | 0.75sec. | 600sec. |
| 160% | 0.25sec. | 50sec. |
| 200% | 0.15sec. | 5sec. |
| 350% | 0.04sec. | 0.5sec. |
| 600% | 0.02sec. | 0.1sec. |

*The fuse characteristic may change depending on the conditions of use.

Dimensions



FUSE HOLDERS



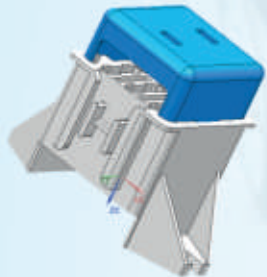
U4302-1201

1 POLE GLASS
FUSE HOLDER



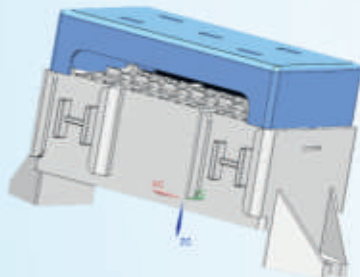
U4302-1201

HYBRID FUSE BOX
(5 PIN RELAY +
3 BLADE FUSES)



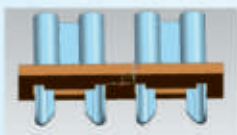
U4306-3403
U4307-3403

FUSE BOX 12 POLE
WITH COVER



U4304-3403
U4305-3403

FUSE BOX 28 POLE
WITH COVER



U4224-4927

FUSE CLIP WITH
BAKELITE HOLDER

TYPES OF PACKAGING



UWS

ULTRA

Blade Fuses

ULTRA WIRING CONNECTIVITY SYSTEM LTD

**Manufacturers of Automotive Connector & Terminal,
Precision Plastic Components, Windshield Wiper Blades & Blade Fuses**

Plot No. 287 - A&B, Sector 59, HSIDC Industrial Estate, Ballabgarh, Faridabad, Haryana 121004 (INDIA)

M.: +91 9311360114, +91 9312327007, +91 9311360110 | E-mail: ultrafbd@gmail.com | Web: www.ultrawiring.com